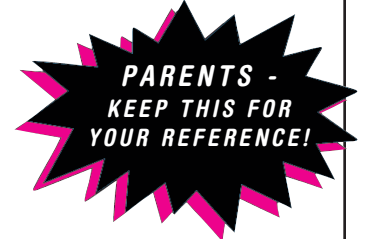




Afterschool Club® SEDOL

Direct: 847-223-8812



Session Times Available:

Tuition is due the first day of each week!

- **SESSION 1** - 6:00am until the start of school day at **Grayslake Afterschool Site** (997 Corporate Circle, Grayslake)
- **SESSION 4** - Grayslake Afterschool Site after 2:00pm until 6:00pm

EARLY DISMISSAL & FULL DAYS OFF - Held at Grayslake Afterschool Site

LUNCH - Please pack a sack lunch for your student on early dismissal days and on full days off.

SNACK - Please pack snacks daily or inquire about Afterschool Club's Snack Program available at your site.

PLEASE MAKE SURE TO NOTIFY YOUR STUDENT'S TEACHER OF YOUR CHILD-CARE ARRANGEMENTS.

AFTERSCHOOL CLUB SEDOL TUITION SCHEDULE

SESSION 1 (6:00-8:00am)	DAILY FEE
ONE:ONE RATIO (1/1)	\$13.50
ONE:THREE RATIO (1/3)	\$11.50
ONE:SIX RATIO (1/6)	\$9.50

SESSION 4 (2:00-6:00pm)	DAILY FEE
ONE:ONE RATIO (1/1)	\$31.50
ONE:THREE RATIO (1/3)	\$23.50
ONE:SIX RATIO (1/6)	\$18.50

EARLY DISMISSAL (after lunch)	DAILY FEE
ONE:ONE RATIO (1/1)	\$41.50
ONE:THREE RATIO (1/3)	\$31.50
ONE:SIX RATIO (1/6)	\$25.50

FULL DAY (early dismissal before lunch or full day 6am-6pm)	DAILY FEE
ONE:ONE RATIO (1/1)	\$57.00
ONE:THREE RATIO (1/3)	\$47.00
ONE:SIX RATIO (1/6)	\$41.00

Minimum sign up required for site to be open. Field Trips and Special Lunches are not included and may require an additional fee. Fees subject to change without notice.

Revised: 9/07